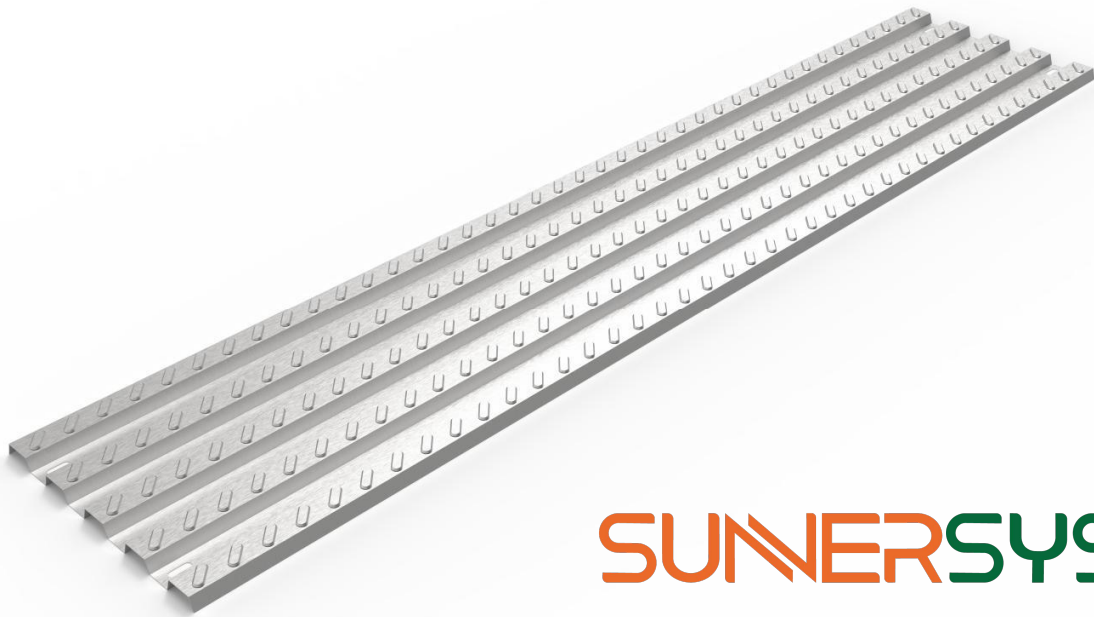




Zinc-Aluminum-Magnesium T-type Walkway



System Features

Simple structure, easy to install

The integrated structural design simplifies the overall structure; the patented connection technology makes installation convenient and efficient; the accessories are pre-installed in the factory, which greatly shortens the construction period.

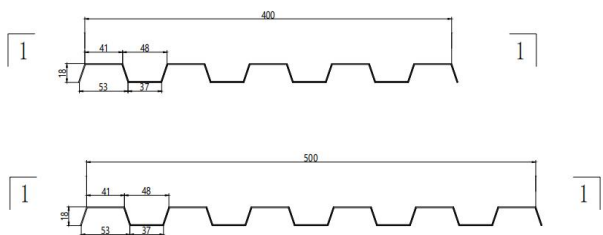
High strength, corrosion resistance

The main structure are made of zinc-aluminum-magnesium materials, and the fastener parts are made of stainless steel, which achieves a dual improvement in high strength and corrosion resistance as a whole.

Customized service support

We can provide one-to-one solutions based on the personalized needs of customers, create a professional and convenient customized service experience, and meet the special installation requirements of different scenarios.

Section Parameter



Fastener



System Parameters

Installation location	Tin Roof	Main Material of Bracket	Zinc-Aluminum-Magnesium
Installation Spacing	0-1200mm	Fastener Material	SUS304
Maximum Load	200KG/Meter	Color	Natural color
Dimensions	400**4000*1/5000*4000*1 or customized	Warranty Period	10 years

1.Physical performance data is based on this year's test report.
All data in this product information is based on our current technology, experience and test data.
This product may be affected by various external factors during use. Product users need to conduct detailed tests on relevant applications and strictly abide by their handling procedures.
Except for the information listed in this document, users cannot infer the legality and validity of other characteristics of this product and the suitability for special purposes.
Users of this product must bear their own expenses and comply with relevant protection rights and current laws and regulations. In addition, our general terms and conditions on sales and guarantees are valid.

